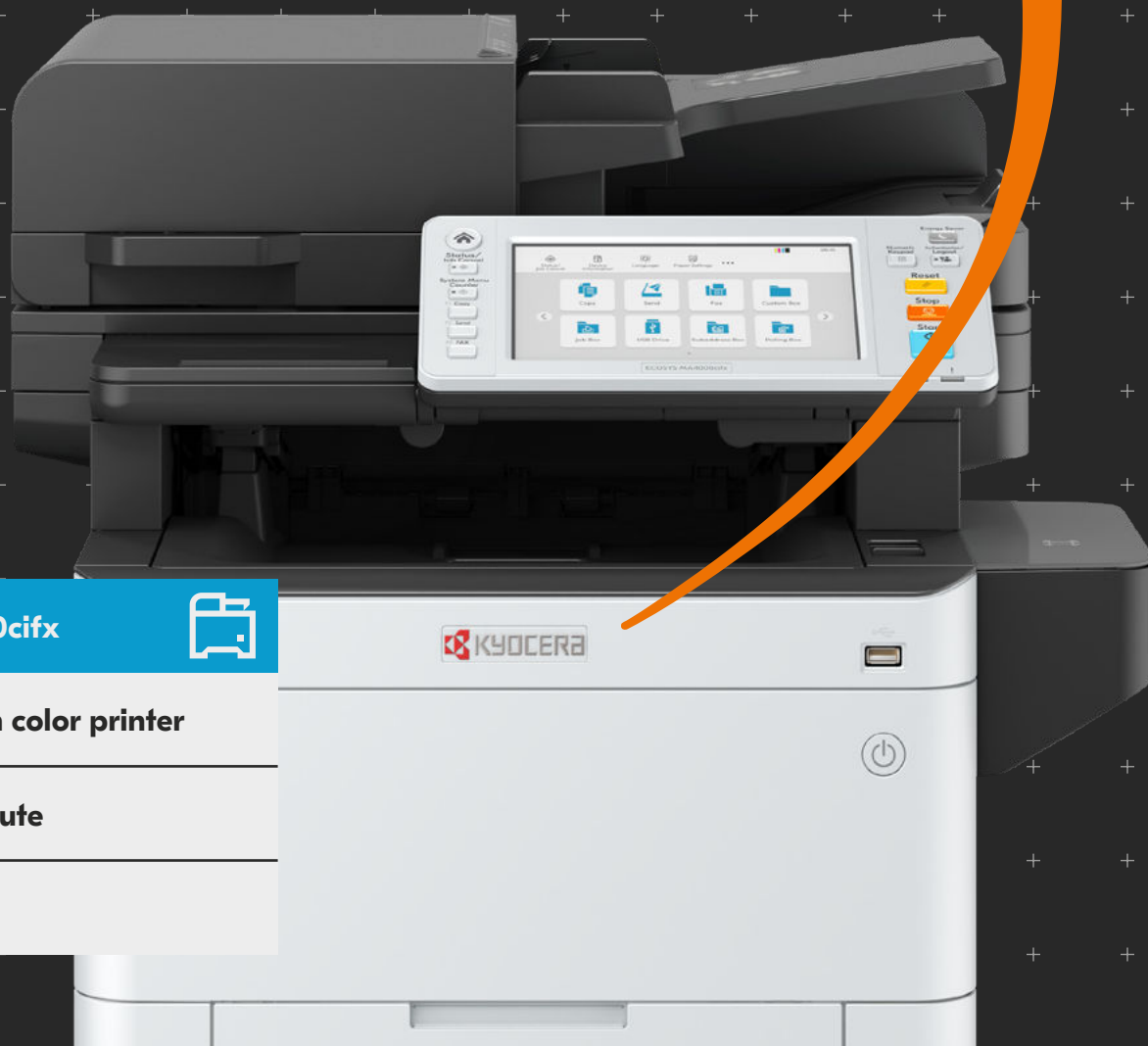


# Skyrocket your efficiency

This ECOSYS MA4000cifx is an all-in-one color solution for medium and large-sized work groups, offering everything from double-sided print to copying, scanning, and faxing. Our open solution platform, HyPAS, enables powerful customizations for specific tasks while the Dual Scan Document Processor feeder ensures problem-free and rapid scanning.



**ECOSYS MA4000cifx**



**A4 multi-function color printer**

**42 pages per minute**

**Compact design**

## Specifications

### GENERAL

**Configuration:** Color MFP - Print / Scan / Copy / Fax  
**Black/Color - Letter:** 42 ppm; Legal: 34 ppm; A4: 40 ppm  
**Duplex Print Speed:** Letter 34.5 ppm; Legal 28 ppm; A4 33 ppm  
**Display:** 7" Color Touch Screen Control Panel (TSI)  
**Warm Up Time:** 26 Seconds or Less (Power On)  
**First Page Out Time:**  
**Copy:** 5.8 Seconds or Less Black, 6.9 Seconds or Less Color  
**Print:** 5.4 Seconds or Less Black, 6.6 Seconds or Less Color  
**Resolution:** 1200 x 1200 dpi<sup>1</sup>, 9600 dpi x 600 dpi, 600 x 600 dpi  
**Memory:** Std/Max: 2 GB / 3 GB  
**Duplex:** Standard Stackless, Supports Statement to Legal (5.5" x 8.5" - 8.5" x 14"), 16 lb Bond - 90 lb Index (60 - 163gsm)  
**Dimensions / Weight:** 18.9" W x 22.7" D x 22.5" H / 107 lb  
**Maximum Monthly Duty Cycle:** 100,000 Pages per Month

### POWER CONSUMPTION

**Electrical Requirements:** 120V, 60Hz, 9.9A; 220-240V, 50/60Hz, 5.4A  
**Typical Electricity Consumption (TEC):** 120V: 0.41 Wh/week; 220-240V 0.40 Wh/week  
**Maximum (Including options):** 120V: 1,343 W; 220-240V: 1,344 W  
**Copy / Printing:** 120V: 620.6W/613.2W; 220-240V: 575.0W/573.6W  
**Ready Mode:** 120V: 18.4W; 220-240V: 18.8W  
**Sleep Mode:** 120V: 0.5 W; 220-240V: 0.6 W  
**Power Off:** 120V: 0.1 W; 220-240V: 0.1 W

### PRINTER SPECIFICATIONS

**Standard Controller:** ARM Cortex-A9 Dual core  
1.2GHz + ARM Cortex-M3 100MHz  
PDLs / Emulations: PRESCRIBE, PCL6 (PCL-XL/PCL-5c), KPDL3, XPS, OpenXPS, KPDL-PDF  
**Fonts:** PCL, KPDL, Cambria, Calibri and Bitmap  
**Barcodes:** 1 Dimensional: 45 Type; 2 Dimensional: PDF417 1 Type  
**Windows OS Compatibility:** Windows 8.1, Windows 10, Windows 11, Windows Server 2012/R2, 2016, 2019  
**MAC OS Compatibility:** MAC OS X 10.9 or greater  
**Google Chrome OS:** version 118 or higher  
**Linux OS Compatibility:** Linux PPD  
**Interfaces:** 10 BASE-T/100 BASE-TX/1000 BASE-TX, 2 High-Speed USB 2.0 Ports, 1 Expansion Slot; **Optional:** Wireless LAN IB-37, IB-38, IB-51  
**Mobile Printing:** KYOCERA Mobile Print, KYOCERA MyPanel, KYOCERA Print Service Plugin, WIA/Scan, ChromeOS(Scan), Apple AirPrint®, Mopria®  
**Network Print and Supported Protocols:** TCP/IP, IPv4, IPv6, NetBEUI, FTP, LPR, Port9100, IPP, WSD Scan/Print, DHCP, DNS, PNP-X, USB, LDAP, SNMP, SMTP, PDF Direct Print, PnP-X (WS-Discovery for WSD Print Service)  
**Drivers:** KX Driver, PCL Uni Driver, KPDL Uni Driver, Network FAX Driver, TWAIN Driver, WIA Network, WIA USB, TWAIN Box, MAC Driver, Linux Driver, Chrome Driver

**Utilities:** KYOCERA Net Direct Print, File Management Utility, KYOCERA Print Center, KYOCERA Net Viewer, KYOCERA Device Manager, ID Register, Scan to Folder Setup Tool for SMB, Web Installer, Quick Network Setup, Maintenance Menu, Kyocera Net Manager (Pro & Basic), ID Register, Wi-Fi Setup Tool, Command Center RX; KYOCERA Fleet Services (KFS)  
**Additional Print Features:** HyPAS capable<sup>2</sup>, EcoPrint, Private Print, Proof and Hold, Quick Copy and Job Storage<sup>2</sup>, Gloss Mode, Border Erase, Prevent Color Bleed-thru, Background Density Adjustment; MPT: Banner Printing

### SECURITY

**Standard:** Local & Network Authentication, IPsec, HTTPS, SNMPv3, IPPS, POP over SSL, FTPS and LDAPS, SMTP over SSL, Overwrite & Data Encryption with optional SSD, SHA-2, TLS 1.3

### SCAN FUNCTIONS

**Scan Type:** Color and Black & White Scanner  
**Scan Resolution:** 300 dpi x 300 dpi, 200 dpi x 200 dpi (Default), 200 dpi x 100 dpi, 600 dpi x 600 dpi, 400 dpi x 400 dpi, 200 dpi x 400 dpi  
**Scanning Functions:** PC (SMB), email (SMTP), USB, FTP, WSD, TWAIN/WIA; Continuous Scan, Mixed Originals, Blank Page Skip, ID Card Copy, DP Auto Crop  
**File Formats:** TIFF (MMR/JPEG compression), JPEG, PDF (MMR/JPEG compression), XPS, PDF/A-1, PDF/A-2, PDF (High compression), Encrypted PDF, OPEN XPS, Optional: MS Office & Searchable PDF with Scan Extension Kit (A)<sup>2</sup>  
**Scan Speeds:** Simplex BW/Color: @300 dpi - 60ipm/50ipm; @600 dpi - 40ipm/20ipm  
**Duplex (DSDP) BW/Color:** @300 dpi: 120ipm/100ipm; @600 dpi 80ipm/40ipm  
**Original Size:** Min/Max: Glass/DP: Statement to Legal (5.5" x 8.5" - 8.5" x 14"); Banner: DP Up to 48"

### COPY SPECIFICATIONS

**Image Mode:** Text, Photo, Text & Photo, Graphic/Map, Printer Output  
**Copy Quantity:** 1- 999 / Auto Reset to 1  
**Job Management:** 200 Address Book Records, 100 Department Codes, 100 One-Touch Keys, 20 Program Keys, 6 Shortcut Keys  
**Magnification / Zoom:** Auto Zoom, Full Size, 7 Reduction, 5 Enlargement Preset Ratios, 25% - 400% in 1% Step Increments  
**Additional Copy Features:** Auto Paper Select (APS), Color Balance, Auto Color Select (ACS), Background Density Adjustment, Auto Zoom, Auto Duplex, Continuous Scan, Blank Page Skip, ID Card Copy, Quiet Mode

### DOCUMENT PROCESSOR

**Type / Capacity:** Dual Scan Document Processor (DSDP) / 100 Sheets  
**Acceptable Originals:** Statement to Legal (5.5" x 8.5" - 8.5" x 14")  
**Acceptable Weights:** Simplex / Duplex : 13 - 32 lb Bond (50 - 120gsm)

### FAX SPECIFICATIONS

**Compatibility / Data Compression:** ITU-T G3 Fax / MMR, MR, MH, JBIG  
**Transmission Speed / Modem Speed:** 33.6kbps  
**Fax Memory:** 3.5 MB  
**Fax Functions:** Forwarding, Polling TX/RX, Multipoint Destination, Network Fax TX/RX, Duplex TX/RX, Density adjustment, Original Image Quality, Original Type 1-Sided/2-Sided, Send Size, Continuous scan, Direct Transmission, Mixed Originals (Same Width), Banner

### PAPER SUPPLY

**Standard Paper Sources:** Single 250 Sheet Drawer, 100 Sheet Multipurpose Tray (20 lb. Bond)  
**Standard / Maximum Paper Sources:** 2 / 5 Including Multipurpose Tray  
**Standard / Maximum Paper Capacity:** 350 Sheets / 2,000 Sheets  
**Paper Output Capacity:** 250 Sheets  
**Paper Size:** Standard and MPT: Statement to Legal (5.5" x 8.5" - 8.5" x 14"), Custom  
**Paper Weight:** Standard / Optional Drawers: 16 lb. Bond - 32 lb. Bond. (60 - 120gsm); MPT: 16 lb. Bond - 110 lb. Index (60 - 220gsm)  
**Input Materials:** Plain, Preprint, Bond, Recycled, Thin, Letterhead, Color, Pre-punched, Thick, High Quality, Custom; MPT: Envelope, Coated, Cardstock, Transparency, Labels

### PAPER HANDLING OPTIONS

**PF-5150:** Paper Feed Cassette (550 Sheet x 3)  
**Paper Size:** Statement to Legal (5.5" x 8.5" - 8.5" x 14")  
MPT: Envelope, Custom  
**Paper Weight:** 16 lb Bond - 120 lb Index (60 - 220gsm)  
**Input Materials:** Plain Paper, Bond Paper, Recycled Paper, Pre-punched, Letterhead; MPT: Thick, Coated, Envelope **Dimensions / Weight:** 15.5" W x 21" D x 4.6" H / 9.7 lbs

### ADDITIONAL OPTIONS

**Print Management:** ThinPrint (UG-33)  
**Security:** Optional: Card Authentication Kit (B)  
**SD Card:** 16 / 32 GB  
**SSD:** HD-17: 64 GB SSD / HD-18: 256 GB SSD / HD-19: 512 GB SSD  
**Wireless LAN:** IB-37, IB-38, and IB-51 which does not support HyPAS or KFS  
**Additional NIC:** IB-50 Dual Gigabit NIC  
**Optional Memory:** 1 GB DIMM Memory (DDR3)  
**Other:** Scan Extension Kit (A), USB Keyboard (Customer Supplied)  
Barcode Flash Option for advanced barcode printing

### Note:

<sup>1</sup>At Reduced Speed  
<sup>2</sup>HyPAS Requires Optional SD Card or SSD

ECOSYS stands for ECOlogy, ECONomy and SYStem printing. With their long-life components, ECOSYS devices are designed to maximise durability and minimise the total cost of ownership with regard to maintenance, administration and consumables. The cartridge-free system means that only the toner has to be replaced regularly. The modular design concept allows you to add workflowenhancing functions as required. Integrated system software provides long-term crossnetwork compatibility. KYOCERA's long-life components cost you and the environment less.

HyPAS™



KYOCERA Document Solutions America  
225 Sand Road, PO Box 40008  
Fairfield, New Jersey 07004-0008, USA  
Tel: 973-808-8444



KYOCERA Document Solutions Partner

SEP2023MA4000cifx/VER1.0

kyoceradocumentsolutions.us

\* KYOCERA Document Solutions does not warrant that any specifications mentioned will be error-free. Specifications are subject to change without notice. Information is correct at time of going to press. All other brand and product names may be registered trademarks or trademarks of their respective holders and are hereby acknowledged.

\*\* Depending on the country