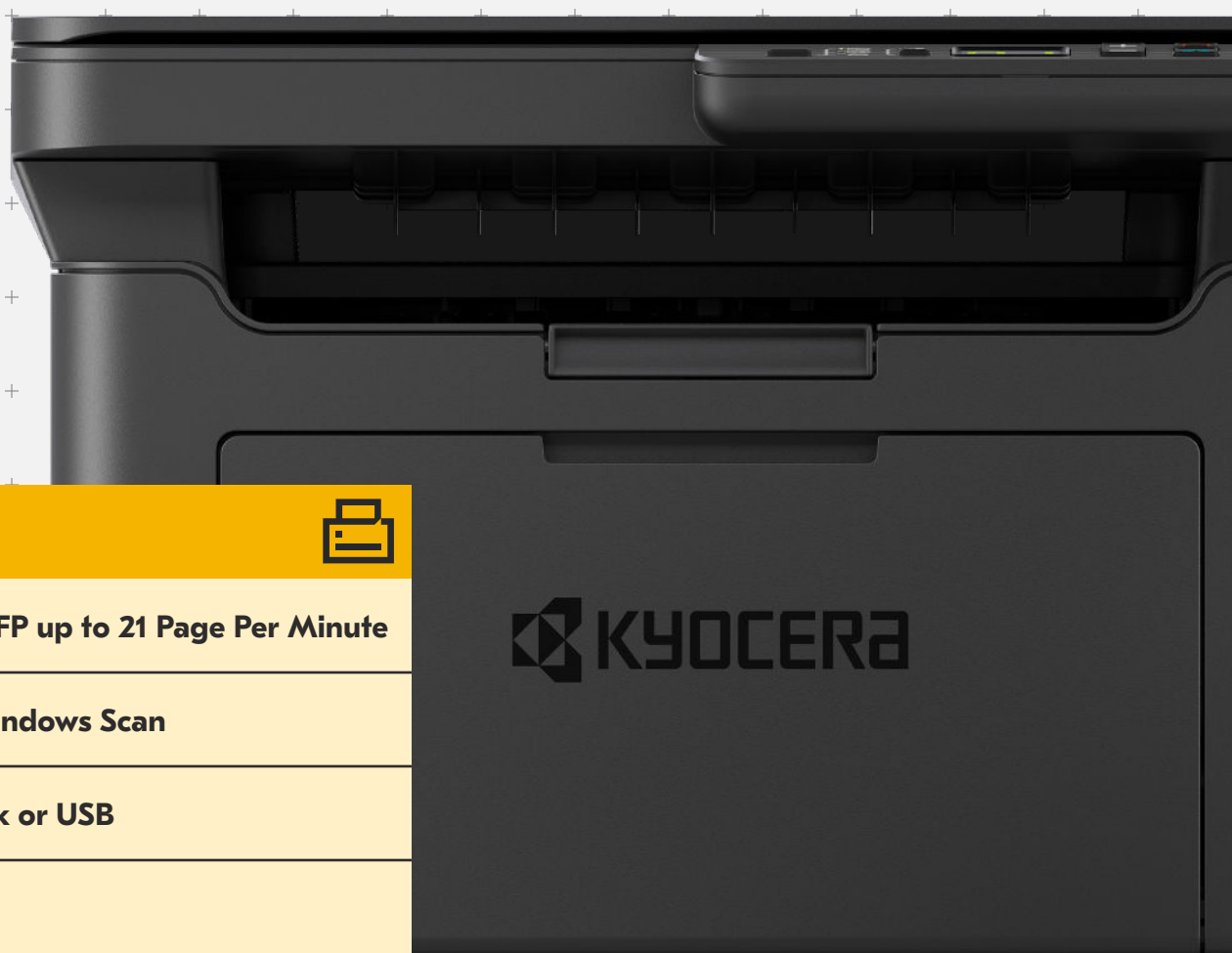


Simple and compact multifunctional printer for offices and homes



MA2000w



Monochrome MFP up to 21 Page Per Minute

Print, Copy & Windows Scan

Wireless network or USB

Lightweight

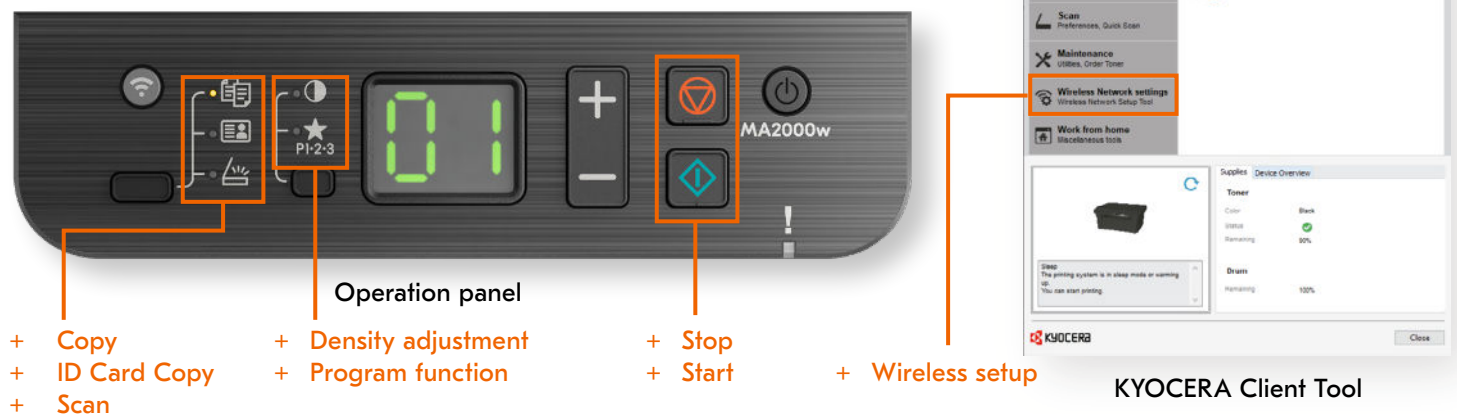
Light and Compact

Due to its light and compact design, the device can be placed on the desk at a reachable distance to support your document tasks, whether you are in the office or working from home.



Easy to Use

The KYOCERA Client Tool is a simple and intuitive utility enabling users to easily print and scan their documents.



*Image is for illustrative purposes only.
Descriptions may differ from the actual content due to page updates.

Easy Setup and Support

Our Kyocera online download center, accessible 24/7, provides support videos for product setups, drivers installations and access to our free Client Tool utility. For easy access to the website, you can simply scan the QR code that is on the front of the printer from any smartphone or tablet.



*Image is for illustrative purposes only.
Descriptions may differ from the actual content due to page updates.

Additional Features Supporting Remote Work

The compact and lightweight design makes it easy to place and use from anywhere. The MA2000w All-In-One toner/developer design utilizes all the toner without any waste. Also, with energy saving EcoPrint Mode and Quiet Mode technology, you're environmentally being green with reduced noise. For IT managers who require printing and scanning activity by remote workers, log data can be saved and exported periodically.

MA2000w

BASIC SPECIFICATIONS

Configuration: Multifunctional Printer - Print/Copy/
Color Scan To Windows
Speed: Letter: 21 ppm; Legal: 17 ppm; A4: 20 ppm
Display: 2 digits LED
Warm Up Time: 20 Seconds or Less (Power On)
First Page Out Time:
Copy: 8 seconds or less
Print: 8 seconds or less
Resolution: 600 x 600 dpi, Fast 1200 Interpolated Resolution
Memory: Std/Max: 64MB
Duplex: Manual operation
Dimensions/Weight: 14.6" W x 12.6" D x 9.4" H/13.7 lb.
Maximum Monthly Duty Cycle: 8,000 Pages per Month

POWER CONSUMPTION

Electrical Requirements: 120V, 60Hz, 5.6A;
220-240V, 50/60Hz, 3.1A
Typical Electricity Consumption (TEC): 120V:
0.23 kWh/week; 220-240V 0.23 kWh/week
Maximum Power Consumption: 120V: 662W; 220-240V: 705W
Copy: 120V: 320.5 W; 220-240V: 345.3 W
Printing: 120V: 314.8 W; 220-240V: 341.1 W
Ready Mode: 120V: 3.1W; 220-240V: 3.3W
Sleep Mode: 120V: 0.4W; 220-240V: 0.4W
Power Off: 120V: 0.1W; 220-240V: 0.2W

PRINTER SPECIFICATIONS

Standard Controller:
ST Micro: STM32G071RBT6 20MHz (Engine Processing),
SOC: ARM926EJ equivalent 450MHz (System Processing)
PDLs/Emulations: Hostbased(GDI)
Fonts: Bitmap: 1 Font

Drivers: GX Driver, KPSL Drivers (MAC & Linux),
Status Monitor, TWAIN Driver, WIA Driver
Windows Printing Compatibility: GX driver
supports; Windows 8.1 to Windows 11 both 32 and 64
bit, Windows Server 2012/R2, 2016, 2019, 2022
MAC & Linux Printing Compatibility: KPSL drivers:
Mac OS X 10.5 up to OS X 10.15
Interfaces: Wireless, 1 High-Speed USB 2.0 Printer Port
Mobile Printing: KYOCERA Mobile Print (IOS/Android)
Network Print and Supported Protocols: TCP/IP, IPv4,
LPR, Port9100, WIA Scan/Print (Only USB), DHCP, DNS
Utilities: Client Tool (Fax & Scan), Web Installer,
Maintenance Menu, Wireless Setup Tool
Additional Print Features: EcoPrint, ID Card Copy

SECURITY SPECIFICATION

Standard: Wireless WPA2-PSK (AES encryption)

SCAN SPECIFICATIONS (WINDOWS ONLY)

Scan Type: Color and Black & White Scanner
Scan Resolution: 200x200dpi, 300x300dpi
(Default), 400x400dpi, 600x600dpi
Client Tool Functions For Windows Scanning:
Scan to SMB, Scan to Email, Network TWAIN,
WIA Scanning (via USB and Client Tool)
File Formats: Support PDF, TIFF, JPEG, BMP,
PNG via Client Tool
Original Size: Min/Max:
Glass: Statement to Letter (5.5" x 8.5" — 8.5" x 11")
Max Original Size: Letter

COPY SPECIFICATIONS

Image Mode: Text + Photo, Photo, Text,
Density adjustment 7 steps
Continuous Copy: 1 — 99
Job Management: Program Key: Able to register 3 jobs
Magnification/Zoom: 25 - 400% in 1% Step Increments
Additional Features: EcoPrint, ID Card Copy, Quiet Mode

PAPER HANDLING

Standard Paper Sources: Single 150 Sheet Drawer
Standard/Maximum Paper Sources: 1
Standard/Maximum Paper Capacity:
150 Sheets/150 Sheets
Paper Size: A5 to Legal (8.5" x 14")
Paper Weight: Bond 20 - 28lb (65 — 105gsm)
Standard Output Tray Capacity: 50 Sheets (Face Down)
Input Materials: Plain Paper, Recycled Paper

CONSUMABLES

TK-1242: Toner Black for up to 1,500 pages
DK-1242: Drum Black for up to 10,000 pages
Starter toner: Black toner yield 700 pages
(Yield in accordance with ISO / IEC 19752)

Specifications and design are subject to change without notice.
For the latest on connectivity visit kyoceradocumentsolutions.us,
TASKalfa, Kyocera Net Viewer, Kyocera Device Manager, are
trademarks of The Kyocera Companies. Mac OS is a trademark
of Apple, Inc. Windows is a trademark of Microsoft, Inc. All other
trademarks are the property of their respective owners.



Kyocera Document Solutions Partner

KYOCERA Document Solutions America
225 Sand Road, PO Box 40008
Fairfield, New Jersey 07004-0008, USA
Tel: 973-808-8444



kyoceradocumentsolutions.us

Kyocera Document Solutions does not warrant that any specifications mentioned will be error-free. Specifications are subject to change without notice. Information is correct at time of going to press.
All other brand and product names may be registered trademarks or trademarks of their respective holders and are hereby acknowledged.
©2022 KYOCERA Document Solutions America, Inc.